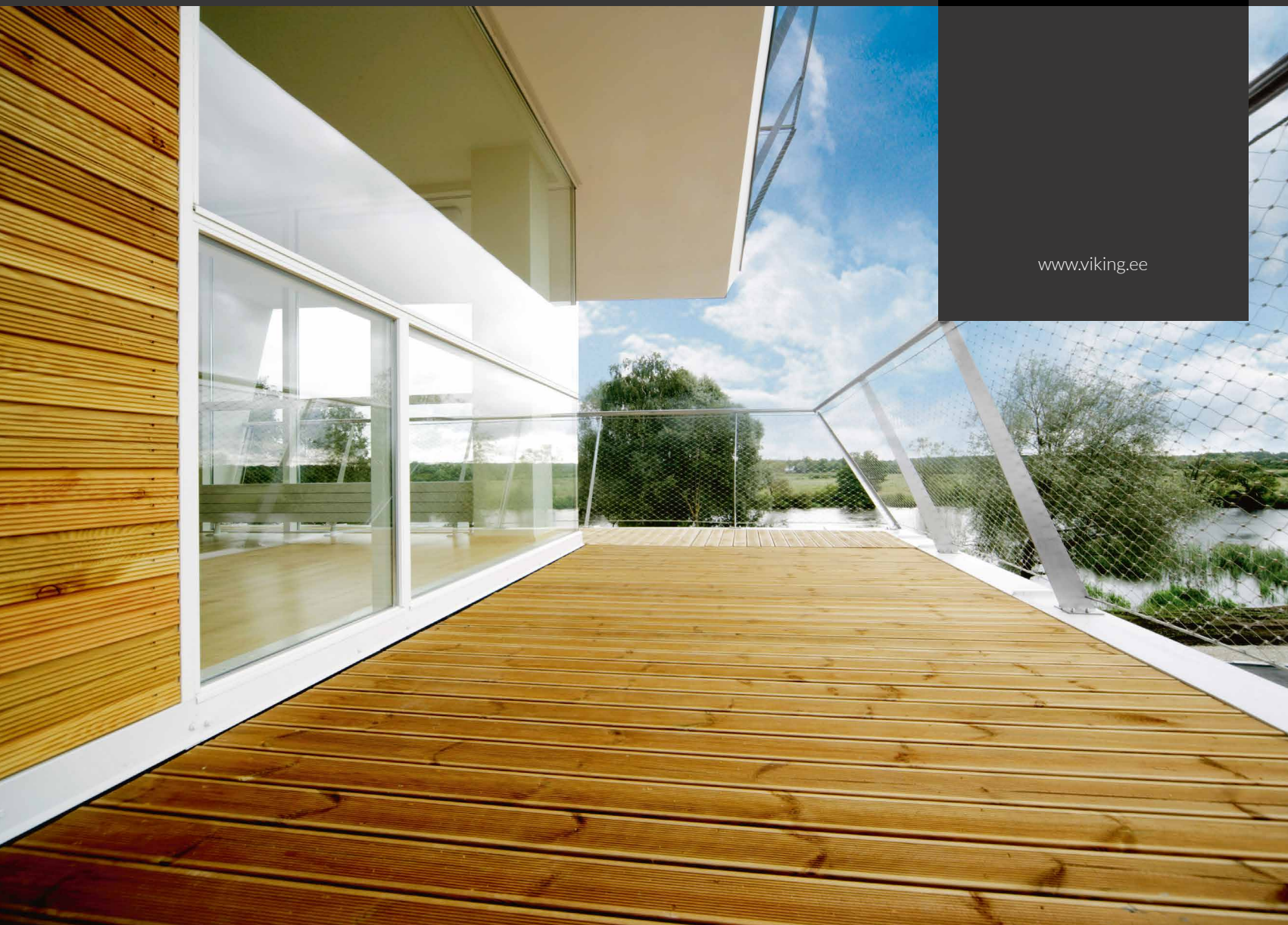




[www.viking.ee](http://www.viking.ee)



ANCIENT IDEA,  
NEW TECHNOLOGY

## VIKING WINDOW

Viking Window is internationally known window and door manufacturer with a very wide product range. Our product lines include Scandinavian, English and German style windows; energy efficient doors and windows; traditional wooden entrance doors and sliding doors. Our products are made of wood and wood-aluminium clad. It is possible to order different size and style windows – exactly the kind you need for your building!

We are focused on solutions that are customer-centered and efficient. We use high quality wood, so all our doors and windows are long lasting and economical. We value the wooden material as it is natural just like the other materials we use – water based colors and stains etc.



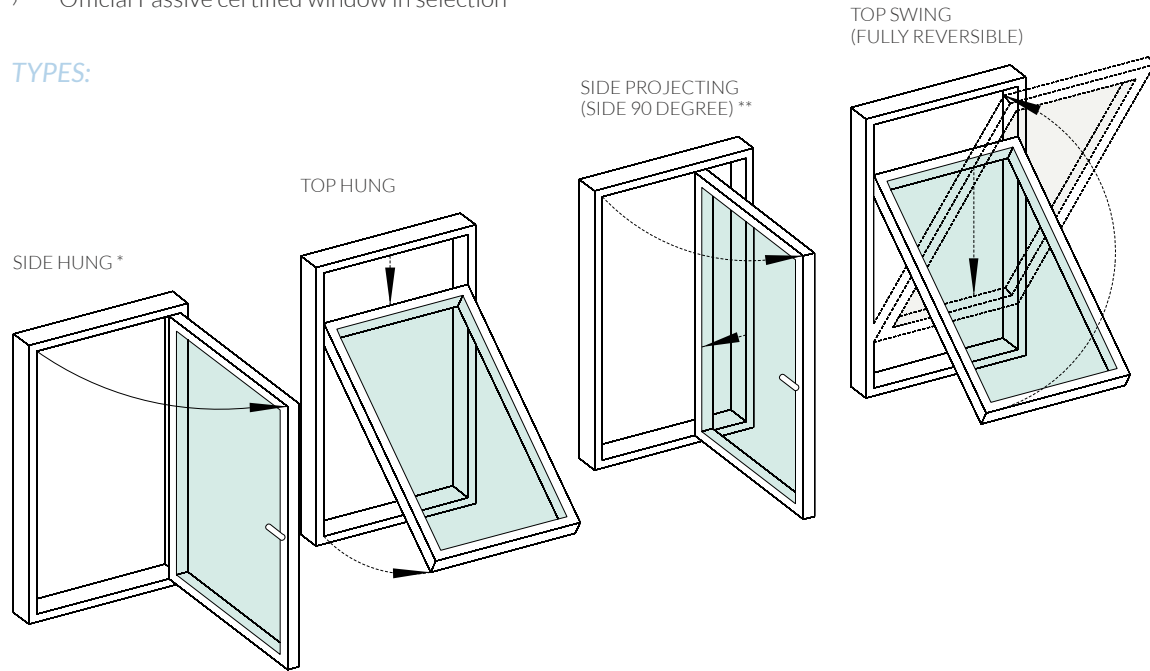


# HIGH TECHNOLOGY INSPIRED BY NATURE

## OUTWARD OPENING WINDOWS

- › Slim profile
- › Excellent for windy and stormy locations
- › Timber and aluclad option
- › Double and triple glazed option
- › Official Passive certified window in selection

### TYPES:



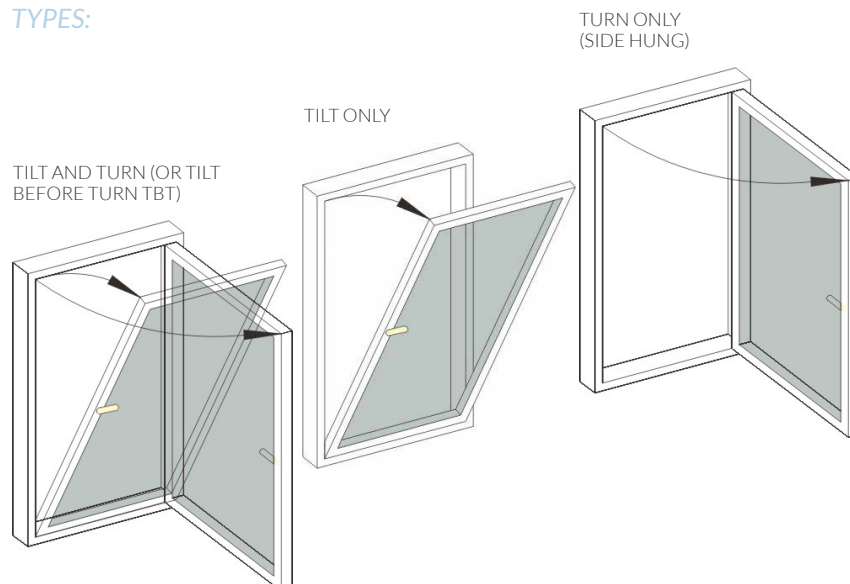
\* Triple glazed window (SW17) has option for concealed hinge

\*\* For double and triple glazed window (Viking21) and SW14 window

## INWARD OPENING WINDOWS

- › Tilt ventilation option
- › Easy to clean
- › Double and triple glazed option
- › Energy efficient solution for Passive houses
- › Timber and aluclad option

### TYPES:





# Possible Window Solutions



## SLIDING SASH WINDOW

- › Up and down moving sliding sash
- › Take little space when opening
- › Possible to have ventilation position
- › Easy to clean

## WINDOWS WITH MULLIONS AND TRANSOMS

- › Horizontal and / or vertical posts (transoms/mullions)
- › Maximum measurements 2,5 x 3,2 m
- › Possible to have movable mullion (flying mullion)

## SPECIAL SHAPE WINDOWS

- › Distinguished look
- › Round windows
- › Triangular windows
- › Thousands of special solutions



## FIRE GUARD WINDOWS

- › Fire protection window EI60 keeps its' consistency in fire at least 60 minutes
- › Fire protection window EI30 keeps the heat away at least 30 minutes
- › Wooden and aluminum window frame
- › Opening and non-opening
- › Very good thermal transmittance, U-value 0,8 W/m²K



## NON-OPENING WINDOWS

- › Increased light opening due to a glazing unit installed directly to the window frame.
- › Fixed casement
- › Maximum measurements 2,5 x 3,2 m



# ENTRANCE DOOR – THE SYMBOL OF HOME







You can order outward or inward opening and single or double leaf traditional entrance doors, panel doors or terrace doors.

## PANEL DOOR

- › Secure and stable
- › One integral insulated door leaf
- › Three-point locking
- › Weatherproof
- › Additional insulation
- › Aluminium layer for moisture protection
- › Two Low Energy and one regular glass panes
- › Thermal transmittance  $U_w = 0,8 \text{ W/m}^2\text{K}$
- › Very good energy efficiency
- › Wood and wood-aluminum clad
- › Possible to design the door with grooves and glazing

### LOCKING SYSTEMS:



PANEL DOOR WITH  
MACO SYSTEM

PANEL DOOR WITH  
ASSA SYSTEM

PANEL DOOR WITH PULL  
HANDLE (SLAM SHUT)

## STANDARD MODELS



PR. 100

PR. 109

PR. 110

PR. 111

PR. 112

PR. 113

PR. 114

# Terrace and Balcony Solutions

## INNOVA SLIDING DOORS

- › New innovative sliding door design - outward opening sliding patio door
- › Storm proof and very comfortable to operate
- › Sleek profiles, no sash in the fixed side (panoramic solution)
- › Aluclad and PAS24 security and C-scheme options also available



## LIFT AND SLIDE DOORS

- › Suitable for balconies and patios
- › Active leaf inside
- › Sliding system
- › Threshold "sunked" into floor if desired
- › Fixed ventilation position
- › Electrical sliding door option - E-Power
- › Aluclad and PAS24 security and C-scheme options also available



## TERRACE DOORS

- › Outward or inward opening
- › Three point locking
- › Comfortable handle
- › Single or double leaf



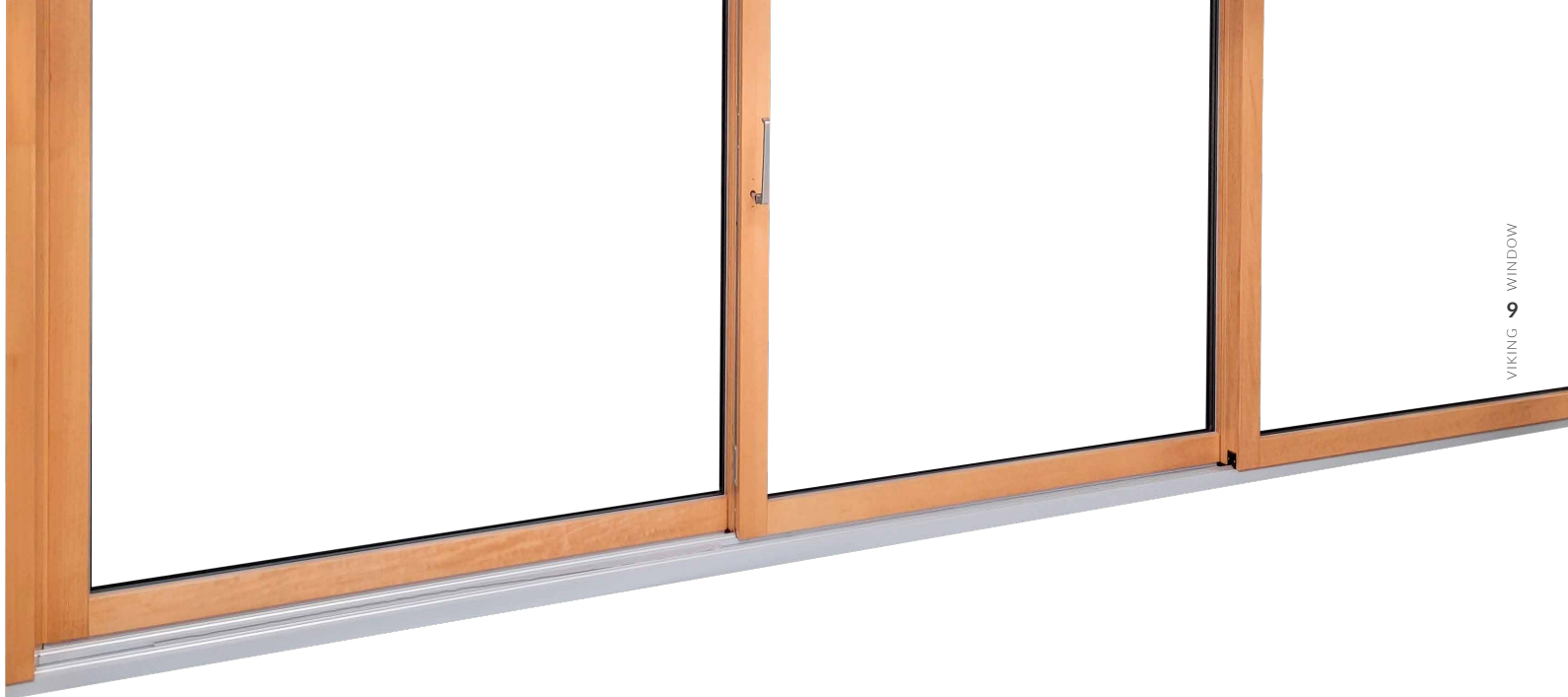
## E-POWER ELECTRICAL SLIDING DOOR

E-Power sliding door is a new and unique sliding door that works with an electric motor

- › Excellent thermal insulation
- ›  $U_d = 0.75 \text{ W / m}^2\text{K}$
- › Control - button, remote control and phone app
- › Integrated engine and batteries
- › Aluminum clad product
- › Large glass area - panoramic product
- › Good weather resistance







## E-SCHEME SLIDING PATIO DOOR (TRIPLE-TRACK)

Lift and slide patio door is best for locations as balconies, terraces and other places where there is not enough room for traditional outward or inward opening solutions, or where is a need for large glazed areas.

Viking Window E-scheme sliding patio doors (triple-track) come with two sliding door leaves equipped with high quality and modern GU-934-H lift and slide hardware system with load bearing capacity up to 300 kg. The espagnolette and strong handle enable convenient operating and possibility to close door in ventilation position. Active leaf is on one side of the door and additional passive leaf in the

middle enables user to gain free opening nearly 2/3 of overall width of door. Due to sashes being in 3 different planes the depth of the door frame is 290mm for wood and 306,5 mm for aluclad.

Sliding patio door is available both as wooden and aluminium clad door. Energy efficient triple glazing (aluclad door 52 mm glazing unit  $U_g = 0.52 \text{ W/m}^2\text{K}$ ; timber door 40 mm glazing unit  $U_g = 0.64 \text{ W/m}^2\text{K}$ ) can be used.

Finishing according RAL, NCS (paint) or Vikings (lacquer) tone catalog by customer's choice preference.



## LIFT AND SLIDE PANORAMA PATIO DOOR (3-GLAZING)

Lift and Slide Panorama Patio Door is a modern solution with even broader view and more light. It has parallel sliding sash but on the fixed side of the door is no sash anymore. The glazing is assembled directly into the frame.

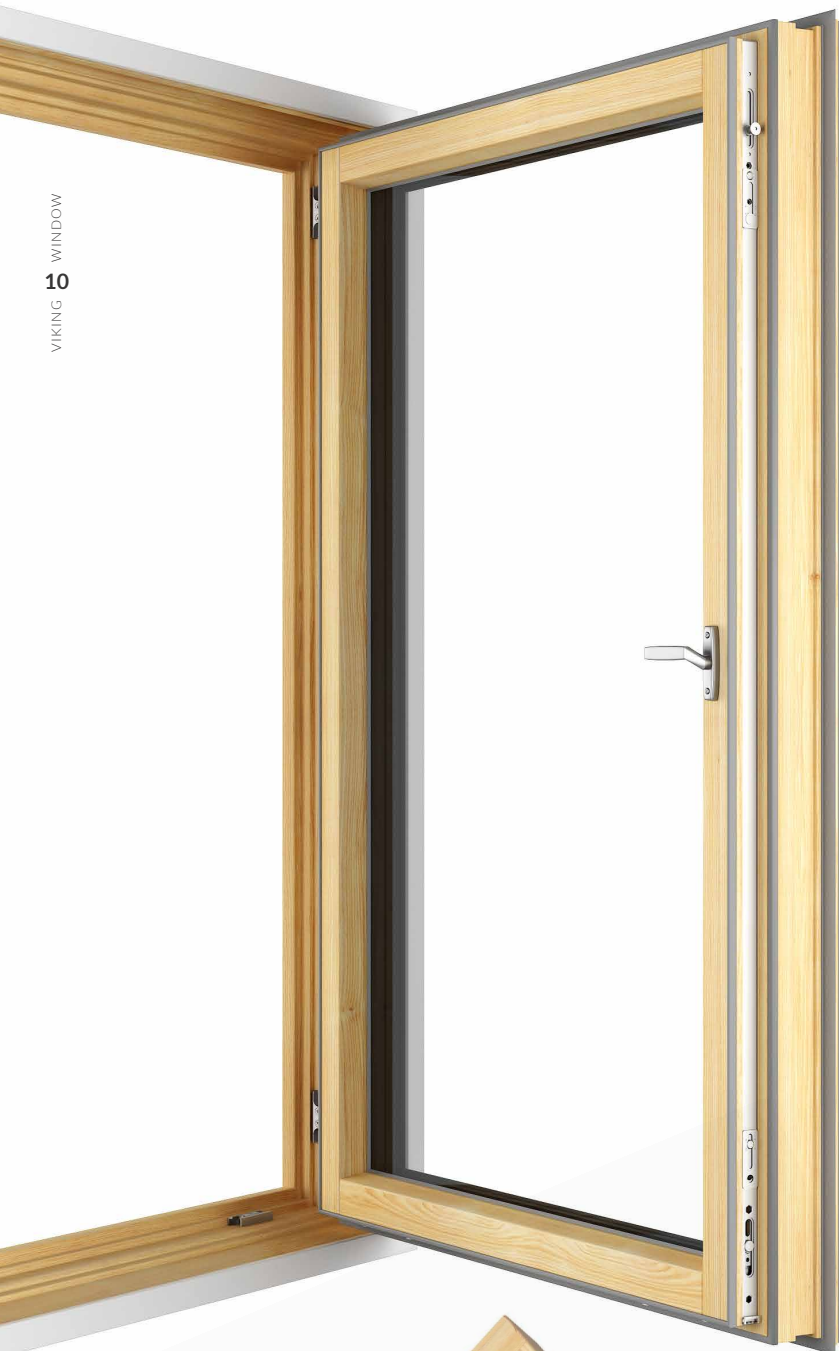
Viking Window sliding patio doors are equipped with high quality and modern GU hinges system. The espagnolette and strong handle enable convenient operating and possibility to close door in ventilation position.

**Lift and Slide Panorama Patio Door is available only as aluclad product.** Energy efficient triple glazing (total thickness 52 mm) ensures U-values as low as  $0.80 \text{ W/m}^2\text{K}$ .

### Improvements on the hardware:

Concealed guide rails and stoppers.

Glazing assembly from exterior side results with nicer visual from the inside - no glazing beads.



# Viking Passive Range

## SW14 PASSIVE WINDOW (3-GLAZING)

SW14 Aluclad Passive window represents a unique Nordic design of high energy efficient windows. It's certified as Passive House Component by Passive House Institute in Germany.

Window profiles are protected by International Registration of Industrial Designs no DM/083922.

### SW14 ALUCLAD PASSIVE WINDOW HAS:

- › Specific design suitable for Nordic countries. Its three gaskets ensure that profile system is highly insulated and condensation risks between frame and casement are minimized.
- › 50 mm triple glazing with 2 low-E coatings (LowE or LowE 1.0) and warm edge spacer (e.g. SGG Swisspacer Ultimate) gives excellent insulation and comfort.
- › Sun protection coatings can be used if needed (e.g. SKN176).
- › Aluminum profile system on exterior side improves the endurance of wooden window.
- › Espagnolette with locking points around the casement secures the window while closed.

You can read more about Passive House on the official web site of Passive House Institute.

The short idea behind the passive window is that it is a certified passive house component. As a rule the standard size window 1.23 m x 1.48 m must achieve **U-value 0.80 W/m²K** or better in case of glazing **U<sub>g</sub> = 0.70 W/m²K** used.





# SAVE ENERGY!

## ENERGY EFFICIENT GLASS UNITS

Triple glazed units guarantee energy efficiency. Hermetic seals provide weather tightness and enable to control indoor climate.

## SUITABLE WINDOWS FOR PASSIVE HOUSE

Viking Window's passive house windows have deeper and thicker wooden profile, triple glazed

unit ( $U_g = 0,47 \text{ W/m}^2\text{K}$  or lower), SGG Swisspacer V or SGG Swisspace U meaning: warm edge solution and multiple frame seal.

Additional functions can be added to provide better security, soundproof and sun protection. It is also possible to order energy efficient blinds, installed into glass unit.

Window's thermal transmittance is  $U_w = 0,7 \text{ W/m}^2\text{K}$  for inward opening window and  $U_w = 0,63 \text{ W/m}^2\text{K}$  for outward opening window.

# Blinds and roller-blinds

Blinds and roller-blinds are developed with a particular focus on customers privacy needs and demands. However, these solutions are important also in energy saving - keeping away solar radiation and overheating.

## SCREENLINE® INTEGRATED BLIND SYSTEMS

In a ScreenLine® system, the blind is encapsulated within two or three glass panes, i.e. in an insulating glass unit. The movement of the blind does not compromise the insulating properties of the double glazing unit and is performed in a totally sealed environment.

The exclusive ScreenLine® characteristics ensure total protection against dirt, dust or weather conditions, and therefore blinds do not require any maintenance. It's control system is cord-operated external magnetic device. The magnetic components have an almost indefinite life cycle.



Solar panel blinds  
(with rechargeable batteries included). Operated with a switch and remote control.

The blinds are installed into hermetically insulated environment. Moving the shutters does not have any effect on the sealing properties of the glazing unit and takes place in a completely closed system. Full protection against dirt, dust and weathering is guaranteed.





# FLYSCREENS

Viking Window AS has developed flyscreen solutions for its entire product portfolio. Different types of mesh materials are available for every situation!

## TYPES OF MESH MATERIALS



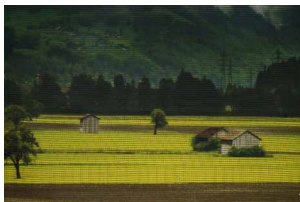
ALUMINIUM MESH



FIBERGLASS FABRIC



E-SMOG



FINE MESH



CAT MESH



SUN PROTECTION  
FIBERGLASS MESH



STAINLESS STEEL MESH



ALLERGIC POLLEN NET

## SOLUTIONS FOR INWARD OPENING WINDOW FLY SCREENS



ALUMINIUM SCREEN ON HINGES



ALUMINIUM SCREEN



RAL9016



E6 / EV1



RAL7016



RAL8001



RAL8014



RAL8022

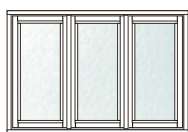
## PRODUCT SOLUTIONS FOR WINDOWS



A-1



A-2



A-3



A-25



A-26



A-27



A-4



A-5



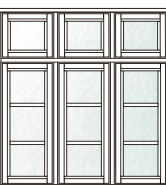
A-6



A-28



A-30



A-31



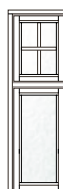
A-7



A-8



A-9



A-32



A-33



A-34



A-10



A-11



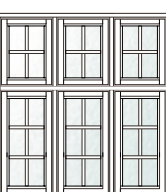
A-12



A-35



A-36



A-37



A-13



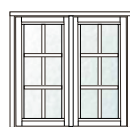
A-14



A-15



A-16



A-17



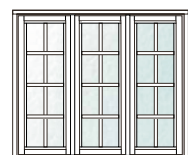
A-18



A-19



A-20



A-21



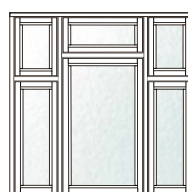
A-22



A-23



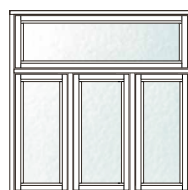
A-24



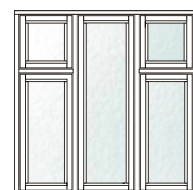
A-39



A-40



A-41



A-42



A-43



A-44



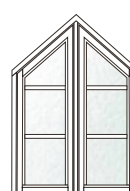
A-45



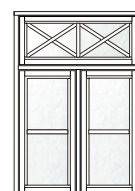
A-46



A-47



A-48



A-49



A-50



A-51



A-52



A-53



A-54



A-55



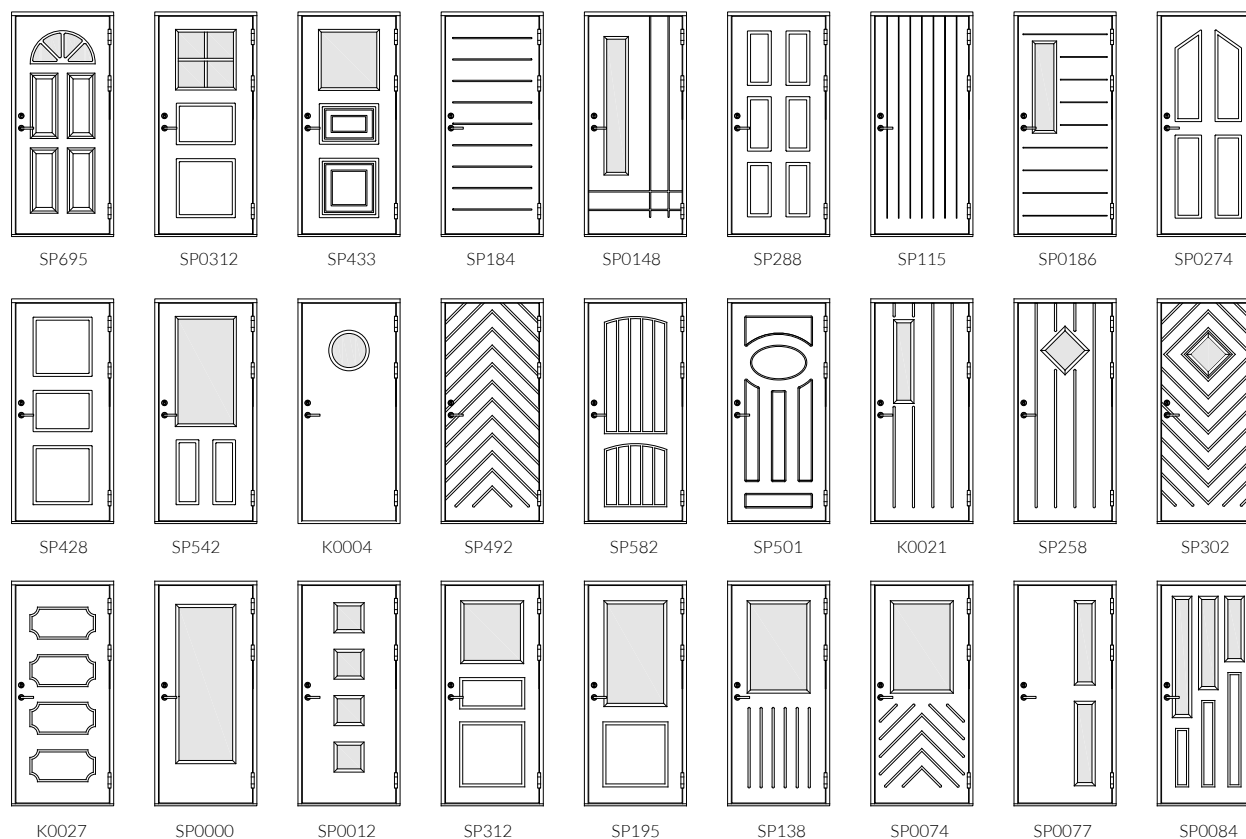
A-56



## PRODUCT SOLUTIONS FOR TRADITIONAL DOORS AND TERRACE DOORS



## PRODUCT SOLUTIONS FOR PANEL DOORS





# ENDLESS COLOR PALETTES





## Popular stain colors for doors and windows



## RAL-Color Chart

Window profiles (wood and aluminium) can be painted in any color from the RAL-color chart. We also offer dual-color finish for the products.



Viking Window's doors and windows are made of high quality engineered/laminated wood, without visible finger joint \*



\* Wooden details, that are over 2 m long, can have limited amount of finger jointed connections.

# VIKING SECURITY PRODUCTS PAS24

Viking Window AS has developed a series of security products across all of its product lines that meet the requirements of the PAS24 in UK.

The security products have specially designed handles, hinges, locks, glass unit solutions, etc. Products that have passed PAS24 testing comply with the latest building regulations in UK. The test includes manual attack, removal of the locking cylinder, hinge load test and impact tests. Having successfully passed these tests, our products give you the peace of mind that the product you buy meets the latest security standards.

## PAS24 PRODUCT GROUPS:

- › Lift-slide doors
- › Outward opening sliding door Innova
- › Inward opening windows
- › Outward opening casement windows
- › Entrance and terrace doors





# Viking Smart Solutions

## YALE DOORMAN LOCKING SYSTEM

- › Yale Doorman is an electronic locking and unlocking system for exterior doors which operates the door handle
- › For locking and unlocking keyboard, locking tag or smartphone app can be used

## HALKE SMART HANDLE

1 handle - 6 ways to open 100 + users

User friendly and moist-proof smart handle is suitable for use in homes. The handle can be opened in the best suitable way for you: with a fingerprint, via an app or wi-Fi, with a code or with a card. To the app you can add several handles, so all doors can be managed from the same place. The app allows to add and remove users quickly and issue temporary access.



## VIKING PET-DOOR

Into the Viking Window door and glass units can now be fitted electric pet door. It is completely weatherproof and even suitable for a passive houses. The gate opens and closes automatically with the chip. For security reasons, it has a built-in surveillance system.

- › programmable pet door system
- › Energy efficient, Passive House element
- › automatic opening and closing
- › works with motion sensor or chip

# EXCELLENT DETAILS





## HANDLES FOR OUTWARD OPENING WINDOW



## HANDLES FOR INWARD OPENING WINDOW



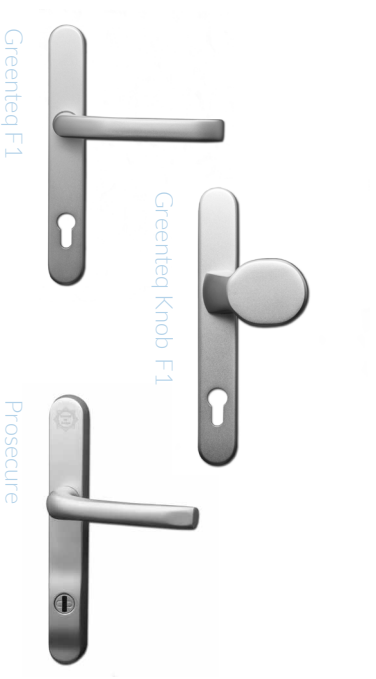
## HANDLES FOR ENTRANCE DOOR



Most popular handle  
options for ASSA  
lock system



Most popular handle  
options for Maco  
lock system



## FINGER-LOCKS FOR OUTWARD OPENING WINDOW



## MONKEY-TAIL



# Door Hardware



Cylinder cover



Door Knocker 590461



Letterbox 112002

FINISHES:

Brushed Stainless

Polished Stainless

Brushed Gold PVD Stainless

Polished Gold PVD Stainless



Door Knob  
Mila



Door Knob  
GreenteQ

## PULL HANDLE OPTIONS



Diamantek  
Metropol SO  
FINISHES:  
Gold  
Black  
Stainless steel

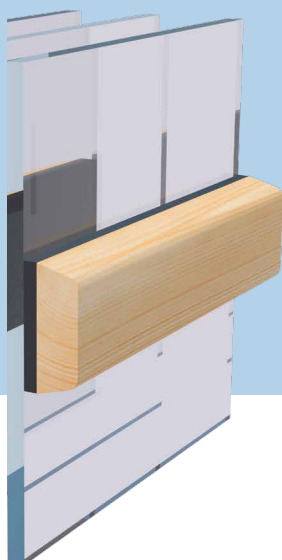


Diamantek  
STYLISH SQC  
FINISHES:  
Any RAL colour

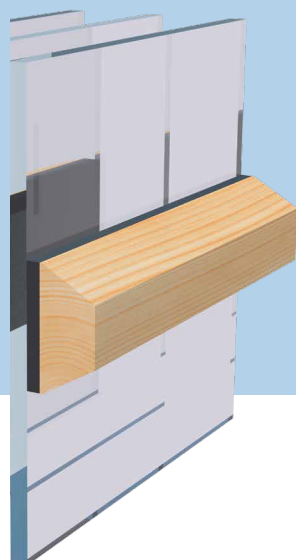


## GLAZING BAR PROFILE TYPES:

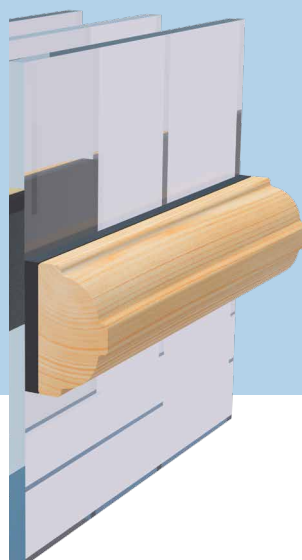
Norwegian profile:



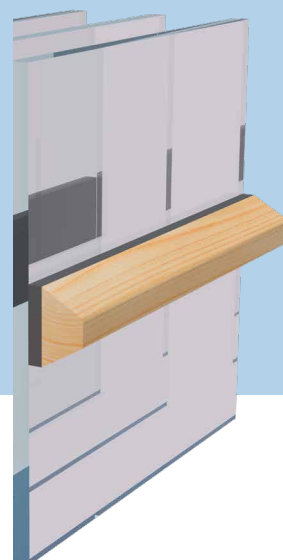
Swedish profile:



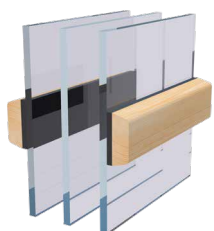
English profile:



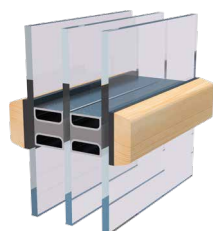
16mm profile:



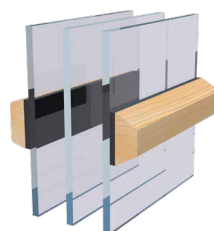
## MOST COMMON GLAZING BAR COMBINATIONS:



Glazing bars 01-00-01  
outside Norwegian,  
inside Norwegian



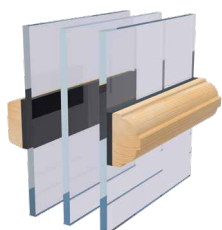
Glazing bars 01-SWS-01  
outside Norwegian,  
inside Norwegian + SWS



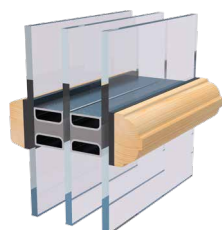
Glazing bars 01-00-03  
outside Norwegian,  
inside Swedish



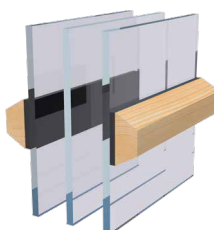
Glazing bars 01-SWS-03  
outside Norwegian,  
inside Swedish + SWS



Glazing bars 01-00-02  
outside Norwegian,  
inside English



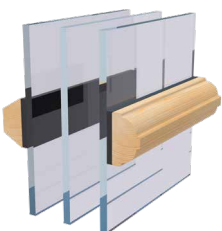
Glazing bars 01-SWS-02  
outside Norwegian,  
inside English + SWS



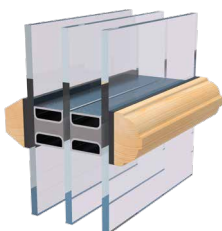
Glazing bars 03-00-03  
outside Swedish,  
inside Swedish



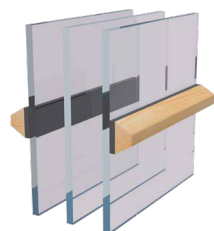
Glazing bars 03-SWS-03  
outside Swedish,  
inside Swedish +SWS



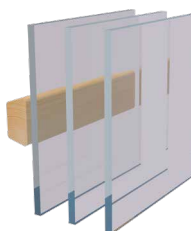
Glazing bars 03-00-02  
outside Swedish,  
inside English



Glazing bars 03-SWS-02  
outside Swedish,  
inside English + SWS



Glazing bars 05-00-05  
outside and inside  
16mm bar



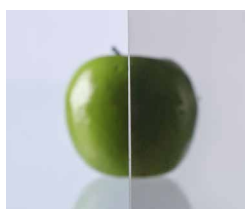
Removable glazing  
bar outside  
04-00-00



## SELECTION OF DIFFERENT GLAZING UNITS



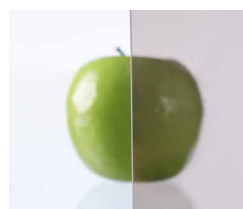
SGG PARSOL GREY



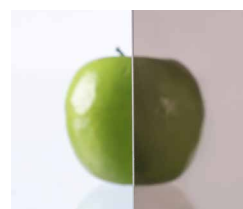
SGG PARSOL BRONZE



SGG SATINOVO



STOPSOL CLASSIC CLEAR



STOPSOL CLASSIC BRONZE



DELTA CLEAR



DELTA MATT CLEAR



DELTA MATT



DELTA BRONZE



DELTA MATT BRONZE



KURA



KURA BRONZE



ORNAMENT 521



CREPI





GLASS UNIT is made of glass panels (two or three), which are connected with the spacer bar and are hermetically sealed with a flexible sealant.

Low Energy glass warms up as quickly as regular glass, but radiates less warmth out of the room. One side of Low Energy glass is covered with the layer of metal oxide.

## ENERGY EFFICIENCY

In order to raise Viking Window's doors and windows energy efficiency, there is:

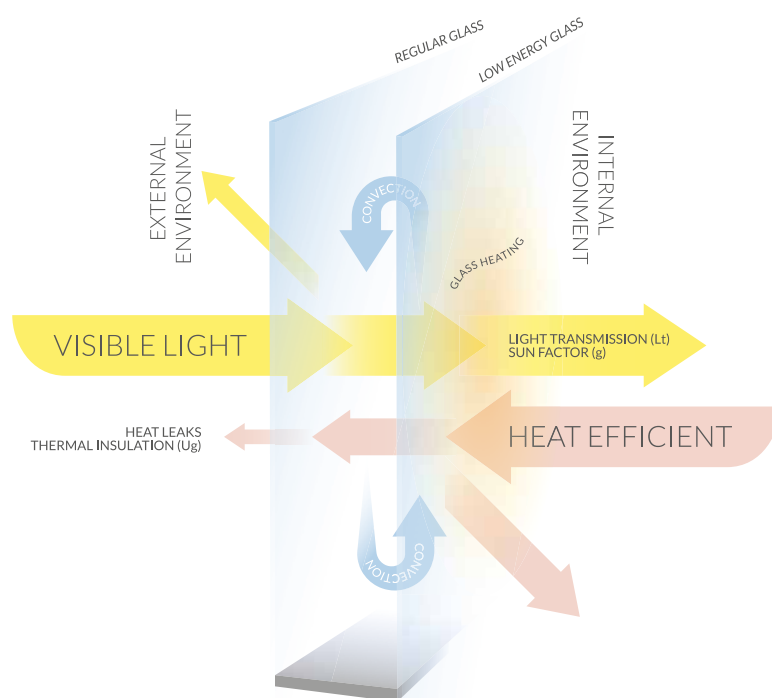
- › Triple glazed window unit with two Low Energy glasses
- › Integrated Blind Systems for Sun Protection

Standard solution involves:

- › Spacer bars for a warm edge solution
- › Using Argon in IGU (insulated glass unit)
- › Double glazed window unit with one Low Energy glass

## ADDITIONAL POSSIBILITIES

- › Security glass (toughened or laminated)
- › Sun protection glass
- › Tinted or colored glass
- › Roller blind system within the glass unit
- › Noise reduction glass
- › Mirror glass
- › Pattern glass
- › Self-cleaning glass (Bioclean)



# INTERNATIONALLY RECOGNIZED SKILLS

Wood is a natural material for human's living environment. It carries the character, beauty and style. As such, it requires special care.

## VIKING WINDOW PAYS SPECIAL ATTENTION TO THE QUALITY REQUIREMENTS.

The company is certified with Quality Management Standard ISO 9001 and Environmental Management Standard ISO 14001.

Viking Window products are CE-marked.

Since 2014 the passive window is added to the Viking Window AS product line. It is developed and produced by Viking Window AS and is part of the passive house components certified by Passive House Institute in Germany.







# CLIENTS ARE RECOMMENDING

Due to a wide product line we have clients all over the world. We value personal and quick service. Windows belonging to the standard selection are manufactured in 3 weeks.

Warranty is 5 years.



Viking Window AS  
Mõo 72751 Järvamaa Estonia  
TEL +372 384 8900  
FAX +372 385 3027  
info@viking.ee

[www.viking.ee](http://www.viking.ee)

